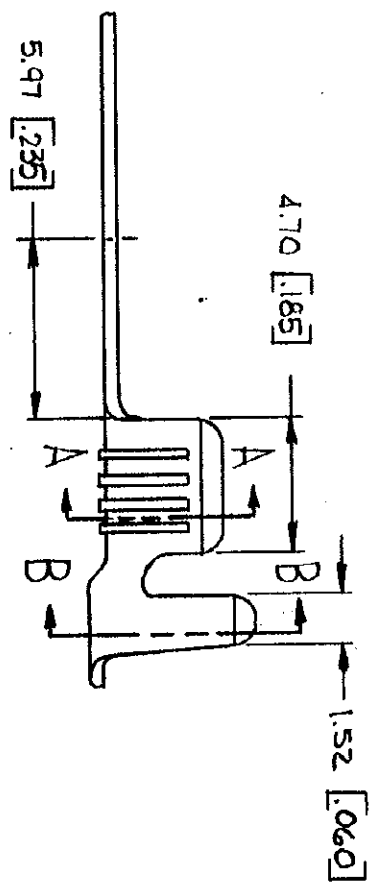
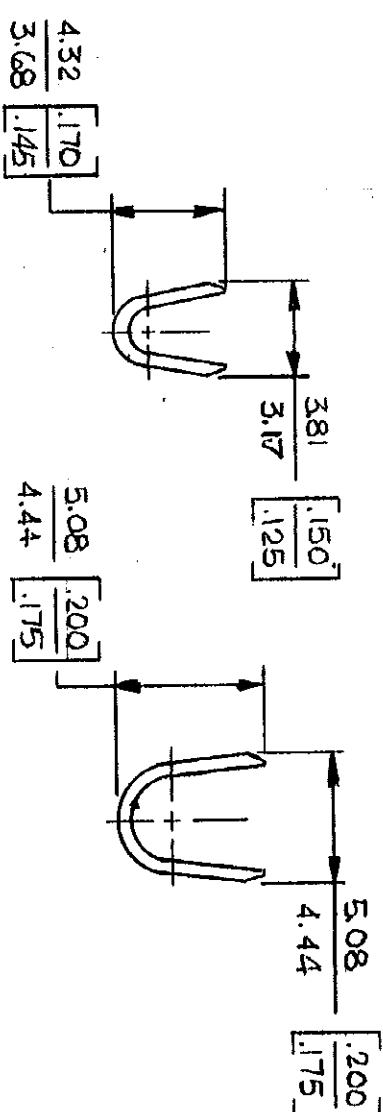
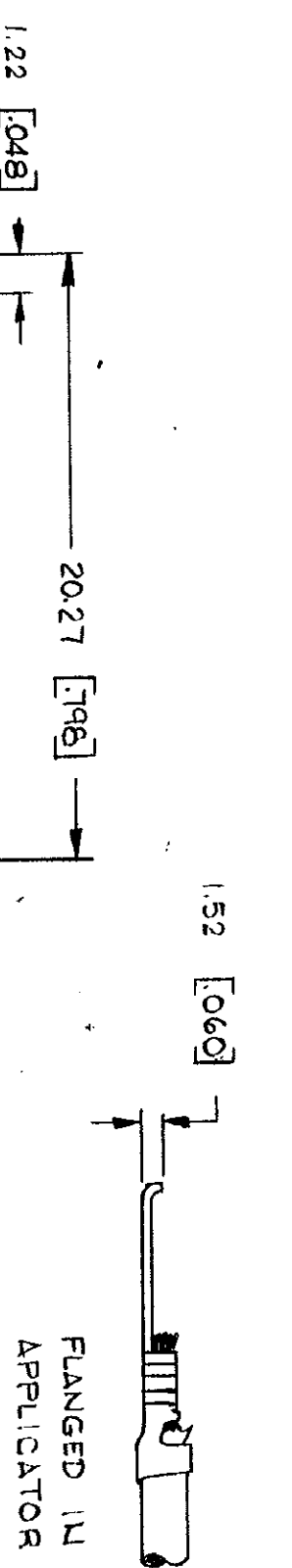


© COPYRIGHT 1964 BY AMP INCORPORATED, HARRISBURG, PA.
 ALL INTERNATIONAL RIGHTS RESERVED. AMP INCORPORATED PRODUCTS
 COVERED BY U. S. AND FOREIGN PATENTS AND/OR PATENTS PENDING.



		REVISIONS			1	Loc	DIST
P	F	ZONE	LTR	DESCRIPTION	DATE	APPROVED	SC
			D	REDRAWN & REVISED A-3943	6-26-78	DTD	SS
			E	ADDED - 3 TTI	9-5-79	PLT	RF
			F	OBSOLETED - 3 PER A-5398	4-15-82	RSJ	64
			G	INSUL SUPP. LENGTH AF-0781	2-20-85	RSJ	64
			H	REVISED AF1994	7/1/86	SS	RF

SECT A-A

SECT B-B

UNLESS OTHERWISE SPECIFIED DIMENSIONS ARE IN INCHES. TOLERANCES ON DECIMALS ± 0.39 [015] ANGLES ± 1° 0'		CONTRACT NO		NAME	
STUD SIZE	WIRE RANGE	INSULATION RANGE	FINISH	MATERIAL	PART NO
M 4 # 8	0.8 - 2.0 mm ² [18-14]	2.54 - 3.56 [100 - 140]	TIN	0.46 BRASS [018]	60774-1
MATERIAL		FINISH		MATERIAL	
SEE TABLE		NONE		BRASS	
FINISH		SEE TABLE		MATERIAL	
SEE TABLE		SEE TABLE		MATERIAL	
MATERIAL		FINISH		MATERIAL	
SEE TABLE		NONE		BRASS	
FINISH		SEE TABLE		MATERIAL	
SEE TABLE		SEE TABLE		MATERIAL	

METRIC

1. CONTINUOUS STRIP ON REELS.
 2. DIMENSIONS IN BRACKETS ARE IN INCHES.
- △ SUFFIX LETTER MUST BE USED ONLY WHEN ORDERING APPLICATOR TOOLING.

DR	D. Dallen	6-26-78
CHK	R. K. Koff	7-25-78
APP	R. D. Hoff	8-8-78
APP	R. S. L. L.	8-10-78
DESIGN APPD		
OTHER APPD		
SIZE	B	
CODE IDENT NO	00779	
DRAWING NO	60774	
SHEET		

SPADE



AMP INCORPORATED
Harrisburg, Pa.

60774-3	
△ 60774-2A	
△ 60774-2	
△ 60774-1A	
△ 60774-1	